



**India Meteorological Department
Earth System Science Organisation
(Ministry of Earth Sciences)**

BULLETIN NO. : 06 (ARB/01/2020)

TIME OF ISSUE: 2030 HOURS IST

DATED: 30.05.2020

FROM: INDIA METEOROLOGICAL DEPARTMENT (FAX NO. 24643965/24699216/24623220)

TO: CONTROL ROOM, NDM, MINISTRY OF HOME AFFAIRS (FAX.NO. 23092398/23093750)

CONTROL ROOM NDMA (FAX.NO. 26701729)

CABINET SECRETARIAT (FAX.NO.23012284, 23018638)

PS TO HON'BLE MINISTER FOR S & T AND EARTH SCIENCES (FAX NO.23316745)

SECRETARY, MOES, (FAX NO. 24629777)

H.Q. (INTEGRATED DEFENCE STAFF AND CDS) (FAX NO. 23005137/23005147)

DIRECTOR GENERAL, DOORDARSHAN (23385843) DIRECTOR GENERAL, AIR (23421101, 23421105, 23421219)

PIB MOES (FAX NO. 23389042)

UNI (FAX NO. 23355841)

D.G. NATIONAL DISASTER RESPONSE FORCE (NDRF) (FAX NO. 26105912, 2436 3260)

CHIEF SECRETARY, KERALA (FAX NO. 0471-2327176)

ADMINISTRATOR, LAKSHADWEEP ISLANDS (FAX NO. 0413-262184)

ADMINISTRATOR, UNION TERRITORY OF DAMAN & DIU (0260-2230775)

ADMINISTRATOR, UNION TERRITORY OF DADRA NAGAR HAVELI (0260-2230775)

CHIEF SECRETARY, KARNATAKA (FAX NO. 080-22258913)

CHIEF SECRETARY, GOA (FAX NO. 0832-2415201)

CHIEF SECRETARY, MAHARASHTRA (FAX NO. 022- 22028594)

CHIEF SECRETARY, GUJARAT (FAX NO. 079-23250305)

Sub: (1) Depression over south coastal Oman and adjoining Yemen

(2) Likely formation of a Low pressure area over Southeast and adjoining Eastcentral Arabian Sea during next 36 hours

(1) The Depression over south coastal Oman and adjoining Yemen moved further southwestwards with a speed of 05 kmph during past six hours and lay centred at 1730 hrs IST of today, the 30th May, 2020 near latitude 17.0°N and longitude 53.9°E, about 20 km west of Salalah (Oman) and 200 km east-northeast of Al-Ghaydah (Yemen). It is very likely to intensify further into a Deep Depression during next 12 hours. It is very likely to move slowly west-southwestwards along south Oman & Yemen coasts.

Forecast track and intensity are given in the following table:

| Date/Time(IST) | Position (Lat. °N/ long. °E) | Maximum sustained surface wind speed (Kmph) | Category of cyclonic disturbance |
|----------------|---------------------------------|--|-------------------------------------|
| 30.05.20/1730 | 17.0/53.9 | 40-50 gusting to 60 | Depression |
| 31.05.20/0530 | 16.8/53.6 | 50-60 gusting to 70 | Deep Depression |
| 31.05.20/1730 | 16.6/53.2 | 50-60 gusting to 70 | Deep Depression |
| 01.06.20/0530 | 16.5/52.7 | 50-60 gusting to 70 | Deep Depression |
| 01.06.20/1730 | 16.2/52.2 | 40-50 gusting to 60 | Depression |

(2) Another low pressure area is very likely to form over Southeast & adjoining Eastcentral Arabian Sea during next 36 hours and concentrate into a Depression over Eastcentral and adjoining Southeast Arabian Sea during subsequent 48 hours and likely to intensify further. It is very likely to move north-northwestwards towards Gujarat & adjoining north Maharashtra coasts during next 4-5 days.

Warnings:

(i) Rainfall:

No adverse weather is likely over the Indian land areas, with the first system, as it is located over south coastal Oman and is expected to move over coastal areas of Oman and Yemen during next 48 hours and dissipate there.

Spatial rainfall distribution: Isolated: <25%, A few: 26-50%, Many: 51-75%, Most: 76-100%

Rainfall amount (mm): Heavy rain: 64.5 – 115.5, Very heavy rain: 115.6 – 204.4, Extremely heavy rain: 204.5 or more.

(ii) Wind warning

Squally wind, speed reaching 45-55 kmph gusting to 65 kmph, very likely to prevail over westcentral Arabian Sea along & off South Oman – Yemen coasts during next 48 hours.

(iii) Sea condition

The sea condition is very likely to be rough to very rough over westcentral Arabian Sea along & off South Oman – Yemen coasts during next 48 hours.

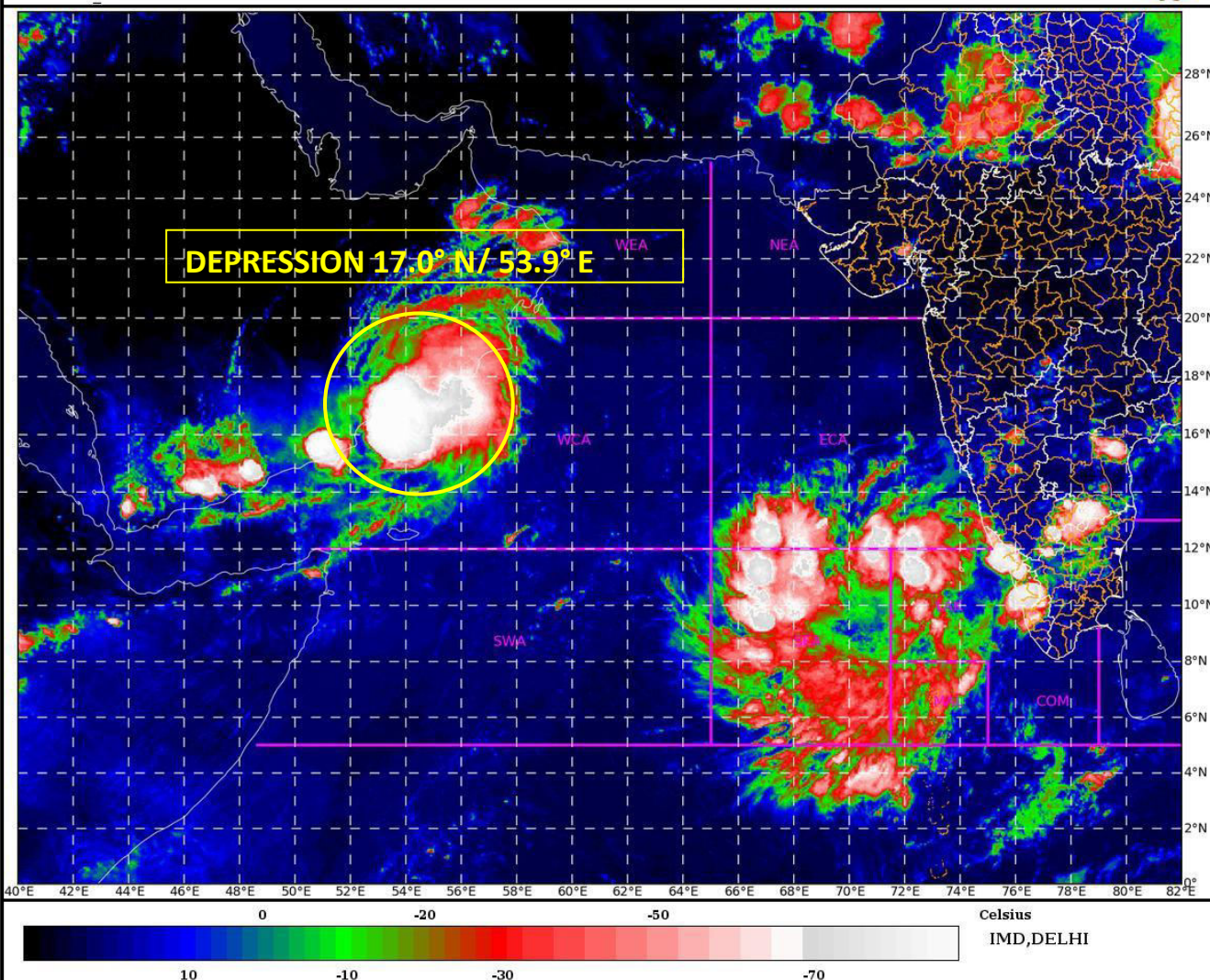
(iv) Fishermen Warning

- The fishermen are advised not to venture into Westcentral Arabian Sea along & off South Oman – Yemen coasts during next 48 hours.
- In view of the likely development of the second low pressure system over southeast & adjoining east-central Arabian Sea, Fishermen are advised not to venture into southeast and adjoining eastcentral Arabian Sea from 31st May, until further advisories.

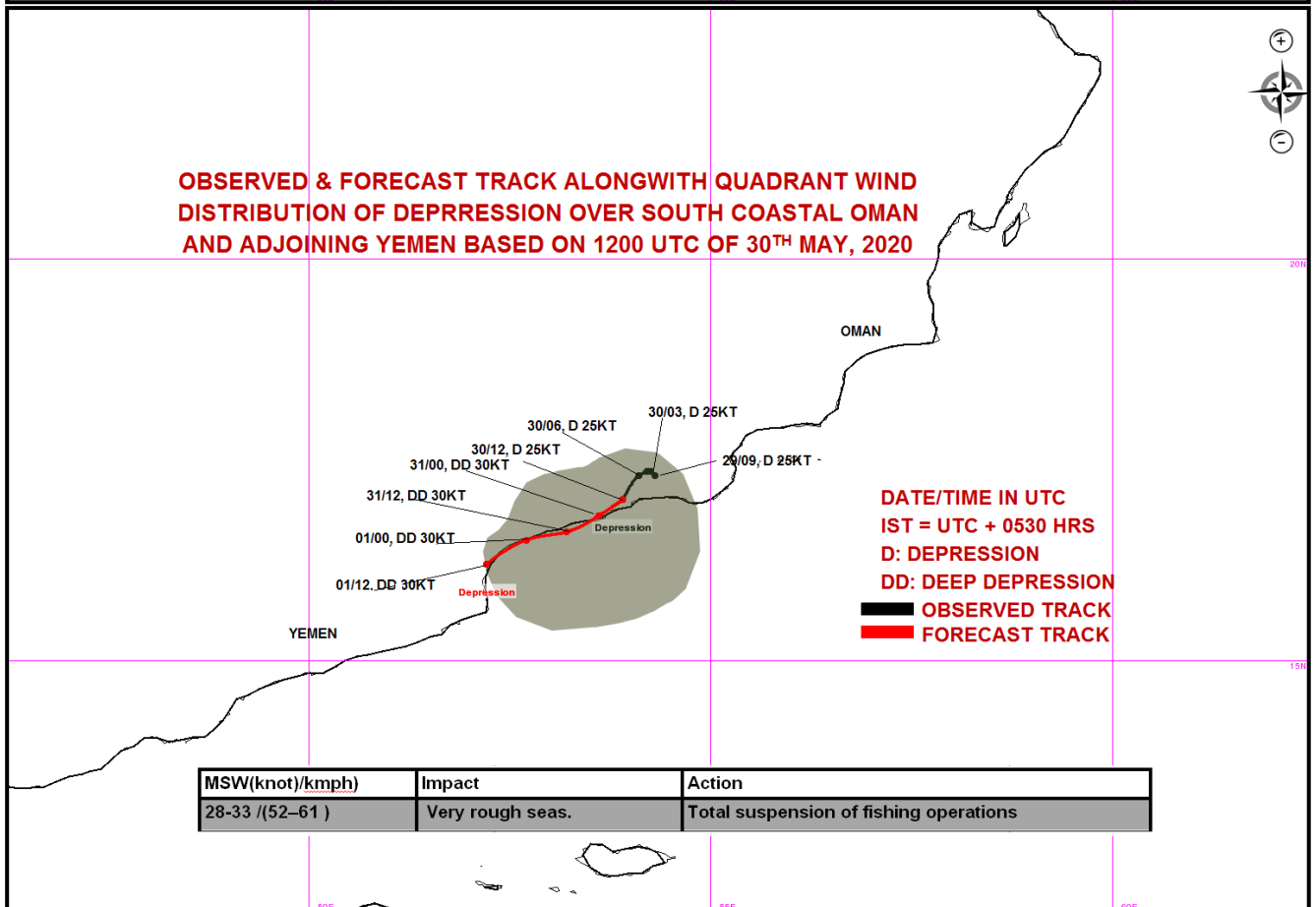
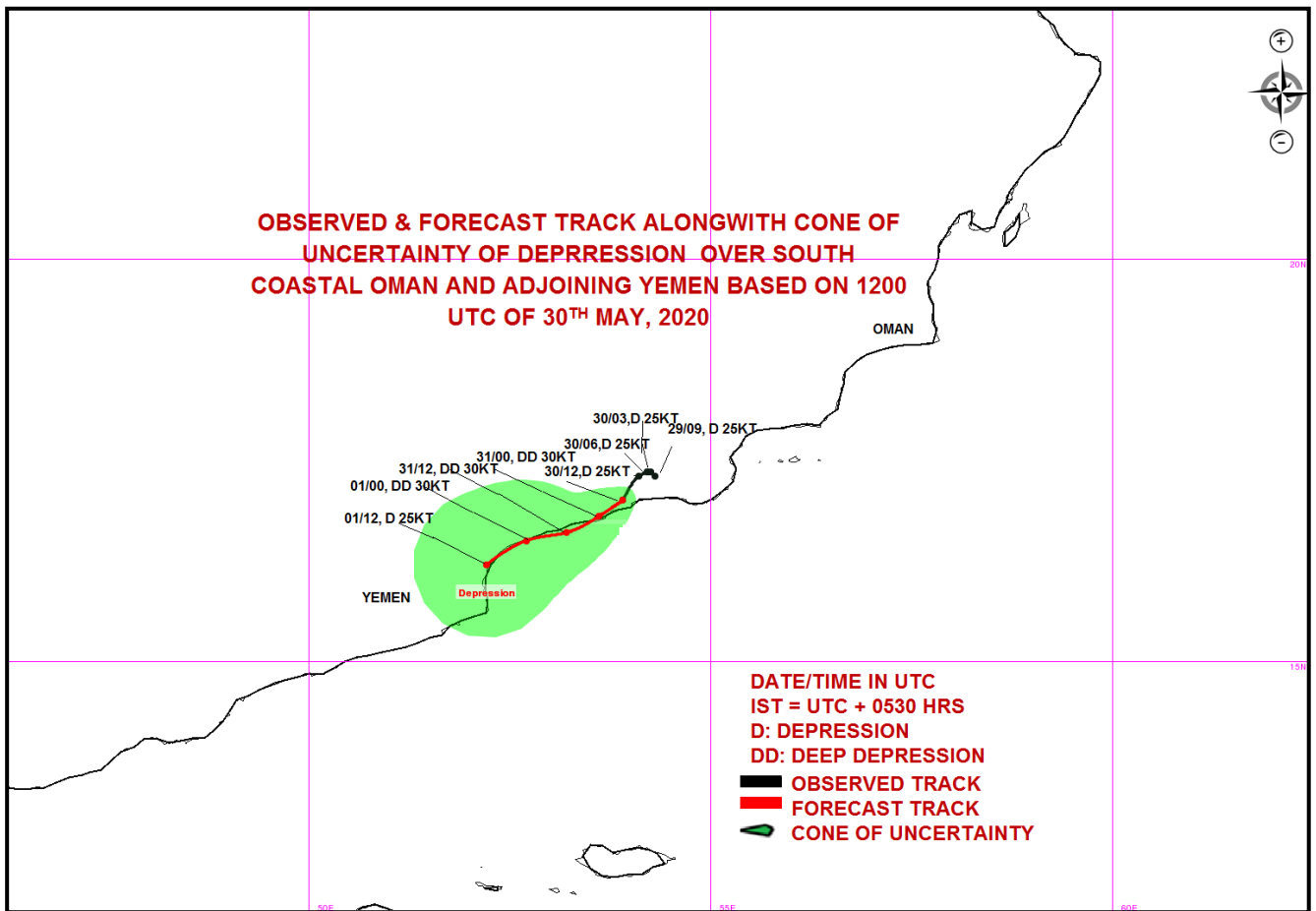
The next bulletin will be issued at 0830 hrs IST of tomorrow, the 31st May, 2020.

(Sunitha Devi. S)
Scientist-E, RSMC, New Delhi

Copy to: ACWC Chennai/ ACWC Mumbai/ MC Goa/ MC Bengaluru/ CWC Ahmedabad/ Thiruvananthapuram.



Spatial rainfall distribution: Isolated: <25%, A few: 26-50%, Many: 51-75%, Most: 76-100%
Rainfall amount (mm): Heavy rain: 64.5 – 115.5, Very heavy rain: 115.6 – 204.4, Extremely heavy rain: 204.5 or more.



Spatial rainfall distribution: Isolated: <25%, A few: 26-50%, Many: 51-75%, Most: 76-100%
 Rainfall amount (mm): Heavy rain: 64.5 – 115.5, Very heavy rain: 115.6 – 204.4, Extremely heavy rain: 204.5 or more.